

Blue Gizmo IAQ Meter with CO² and Smoke Detector, BG88IAQ

Thank you for choosing this instrument from Blue Gizmo.

- Please be sure to read the instruction manual carefully and understand it before operating the device to prevent the damage to the device and loss of your statutory rights arising from defects due to incorrect use.
- We shall not be liable for any damage occurring as a result of not following these instructions. Likewise, we take no responsibility for any incorrect readings for any consequences which may result from them.
- Please take particular note of the safety advice!
- Please keep this instruction manual for future use.

Warnings / Safety Notes

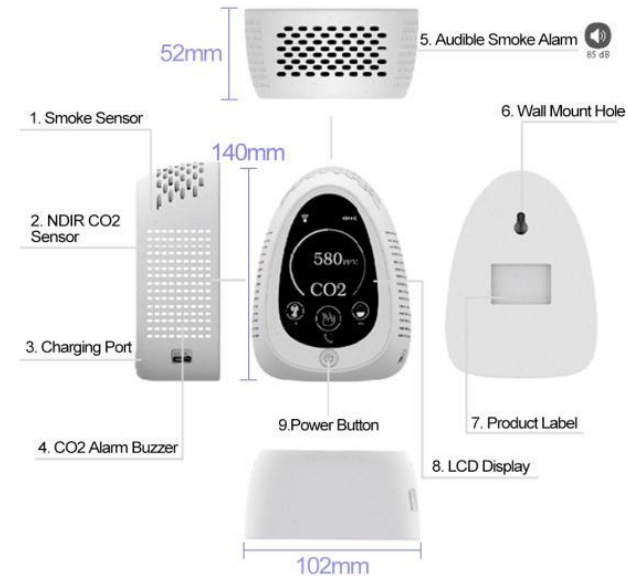
- Please keep the instrument unreachable for children.
- Please use a standard adaptor.
- Do not dismantle, modify, heating, knocking or impacting the instrument.
- Please stop to use immediately if the instrument smoke or have any abnormal situation.
- Do not touch any part of the instrument with wet hands.
- Do not allow metal objects such as pins or keys in contact with the terminal or plug.
- Do not cut or modify the power cord.

Maintenance

- Using the supplied USB charging cable is recommended.
- Do not leave the product in for long time in the poor-quality environment to ensure the service life of the product.
- Do not knock or disassembling the instrument as it may cause the detection to be inaccurate.
- To ensure the accuracy of the detection, allow the device to stand for 10 minutes. It should be put in a ventilated environment for 24 hours to automatically calibrate itself if the device is required to work in a confined space.
- Clean the instrument and the cable with soft damp cloth.
- Do not use alcohol, gasoline and other solvents or scouring agents to clean the instrument

Warning: Do not place the product in an extreme environment such as high temperature or low temperature. This product does not protect against thunder, lightning, and rain.

METER DESCRIPTION



Specification	
Function	Range
Temperature Range	-20°C to 60°C
Temperature Accuracy	± 2°C
Humidity Range	5% to 95%
Humidity Accuracy	± 5%
CO ² Range	400-5000ppm, Resolution: 1ppm
CO ² Accuracy	±50ppm or ±5% of reading
Sensitivity to Smoke	0.1% to 0.3% db/m
Sound Level	85 dB (3M)
Input Voltage	DC 5V
Built-in Rechargeable Battery	1400 mAh

Operating Instruction

Turn On/Off

1. Press the power button and hold for 2 seconds to turn on the device.
2. The corresponding temperature, CO² concentration and humidity can be quickly detector within 5-7 seconds after power is on.
3. Press the power button and hold for 2 seconds to turn off the device.

Set the temperature unit (Fahrenheit to Celsius)

1. Long press the power button to switch it off.
2. Press the power button three times in a row.
3. Long press the power button to switch it on.

CO² reading and colour light indicator

1. 0-499 PPM – Green bar
2. 500-999 PPM – Yellow bar
3. 1000 to 1499 PPM – Orange bar
4. 1500 ppm nad above – Red bar

CO² Alarm Indicator

1. When the CO₂ reading reaches 1000ppm, the device will beep twice. If it exceeds 1500ppm, the device will start to alarm continuously for 20 seconds.
2. To silence the alarm, press the Power button on the unit one time or touch the “Alarm shutdown/Mute” on the APP interface.
3. The alarm will automatically turn off when the value is lower than 1500ppm or after 20 seconds.
4. If the CO₂ reading exceeds 2000ppm, the device alarm will sound again for 20 seconds. Silence it by pressing one time on the Power button or touch the “Alarm shutdown/Mute” on the APP interface. The alarm will be turned off automatically when the value is lower than 2000ppm.
5. When the CO₂ reading exceeds 4000ppm, the device buzzer sounds “Du Du Du Du Du” continuously every 20 seconds. And the App will buzz too.
6. It allows you to reset the CO₂ alarm range from 700 to 5000ppm on APP.

Smoke Alarm Indicator

1. When smoke is detector, the smoke alarm buzzer continuously for 2 minutes.
2. To silence the smoke alarm, press the Power button on the device or touch the ‘Alarm shutdown’ on the App interface. Or it will silence automatically when the reading is below the threshold limit.

Battery Percentage Indicator

The battery level can be accurately displayed on the screen: 25%, 50%, 75%, and 100%. When the battery level is lower than 1%, the monitor will sound ‘Didi’ for 20 seconds. And it only sounds ‘Didi’ six times in one minute. The device will automatically Power on when it is charging. It takes about 4-5 hours to charge.

How to Connect your device to Tuya Apps?

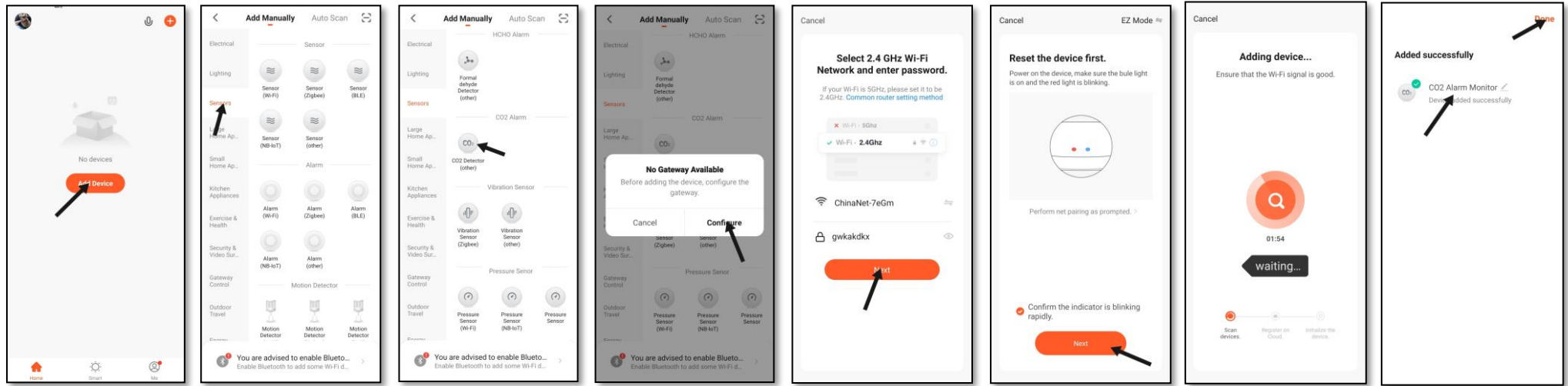
1. Please download “Tuya Smart” in the App Store.
2. Press the power button and hold for 2 seconds to turn on the device. Once the device is turned on, the WiFi function will automatically turn on (WiFi on the screen flashes).
3. Open Tuya app to connect the device.
4. WiFi connection will automatically shutdown if there is no connection within 2 minutes
5. Press the Power button three times in a row, WiFi will turn on, and you can try to connect. Press the Power button three times again, WiFi will turn off.
6. If you wish to connect the device to another phone or reset the connection, you may reset the device by pressing the power button 5 times in a row and wait for 5-10 seconds until the WiFi logo showing on the meter is flashing to start the new connection process.
7. Only one mobile device can be connected to the meter. However, the main mobile device may invite the family member to co-join the device to multiple people to view the meter reading on mobile app.

Remark: WiFi route must be 2.4GHz



How to Connect your device to Tuya Apps? (Please follow the step below)

Please download the “Tuya Smart” app from Google Play Store or Apple Store.



Step 1

Step 2

Step 3

Step 4

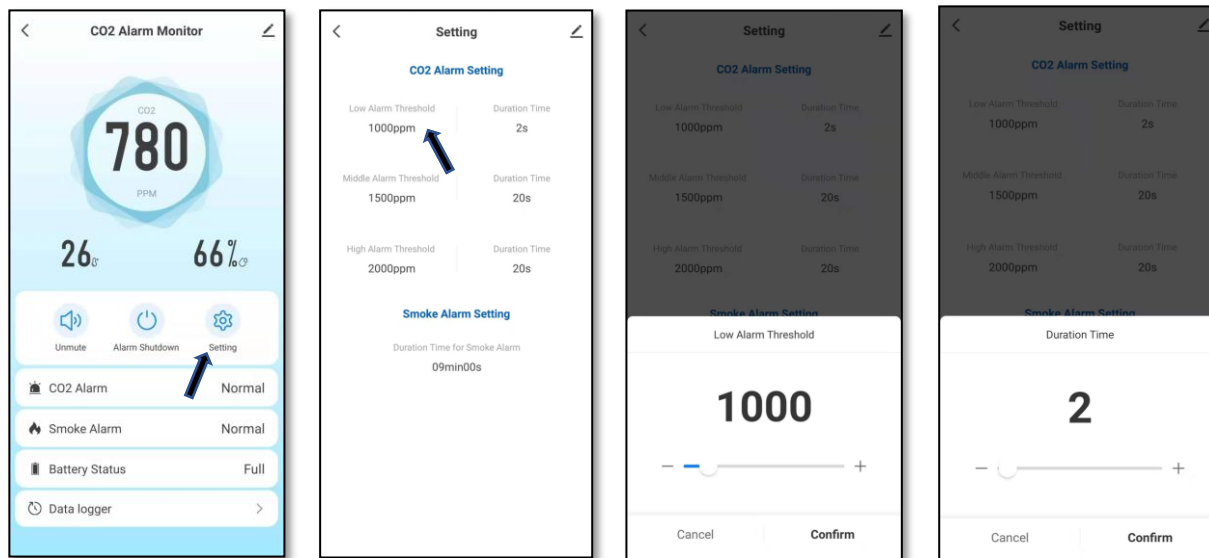
Step 5

Step 6

Step 7

Step 8

How to set the alarm value? (Please follow the step below)



Step 1

Step 2

Step 3

Step 4